

# cambridge nebraska

Life is good!

**ATTRACTIONS**

- 1 Cambridge Lanes
- 2 Cambridge Museum
- 3 Cambridge Schools
- 4 Golf Course Clubhouse
- 5 Cottage Inspirations (quilt shop)
- 6 Patterson Rodeo Arena
- 7 Senior Center
- 8 SL Jonson Studio (call for tour)

- Butler Memorial Library
- Cambridge Outdoor Pool
- McKinley Park
- Medicine Creek Crossings Walking Trail

**RESTAURANTS**

- 9 Big Mama's Eatery/Big Papa's Pizzeria
- 10 Macke's Sports Bar
- 11 Shirley K's Coffee Shop/Mark's Pharmacy
- 12 Town Talk Restaurant

**CONVENIENCE/GROCERY/SHOPPING**

- 13 Ag Valley Co-op (Hwys 6 & 34)
- 14 Blooms & Collectibles
- 15 Cambridge Supermarket
- 16 Casey's General Store
- 17 Duckwall Store
- 18 Napa Auto Parts
- 19 Poor Boys Bait Shop
- 20 Thrift Shop
- U.S. Post Office
- 21 Community Building/City Office

**HOSPITAL/HEALTH CLUB**

- 22 Tri Valley Health System - Hospital
- 23 Cambridge Health Club

**CHURCHES**

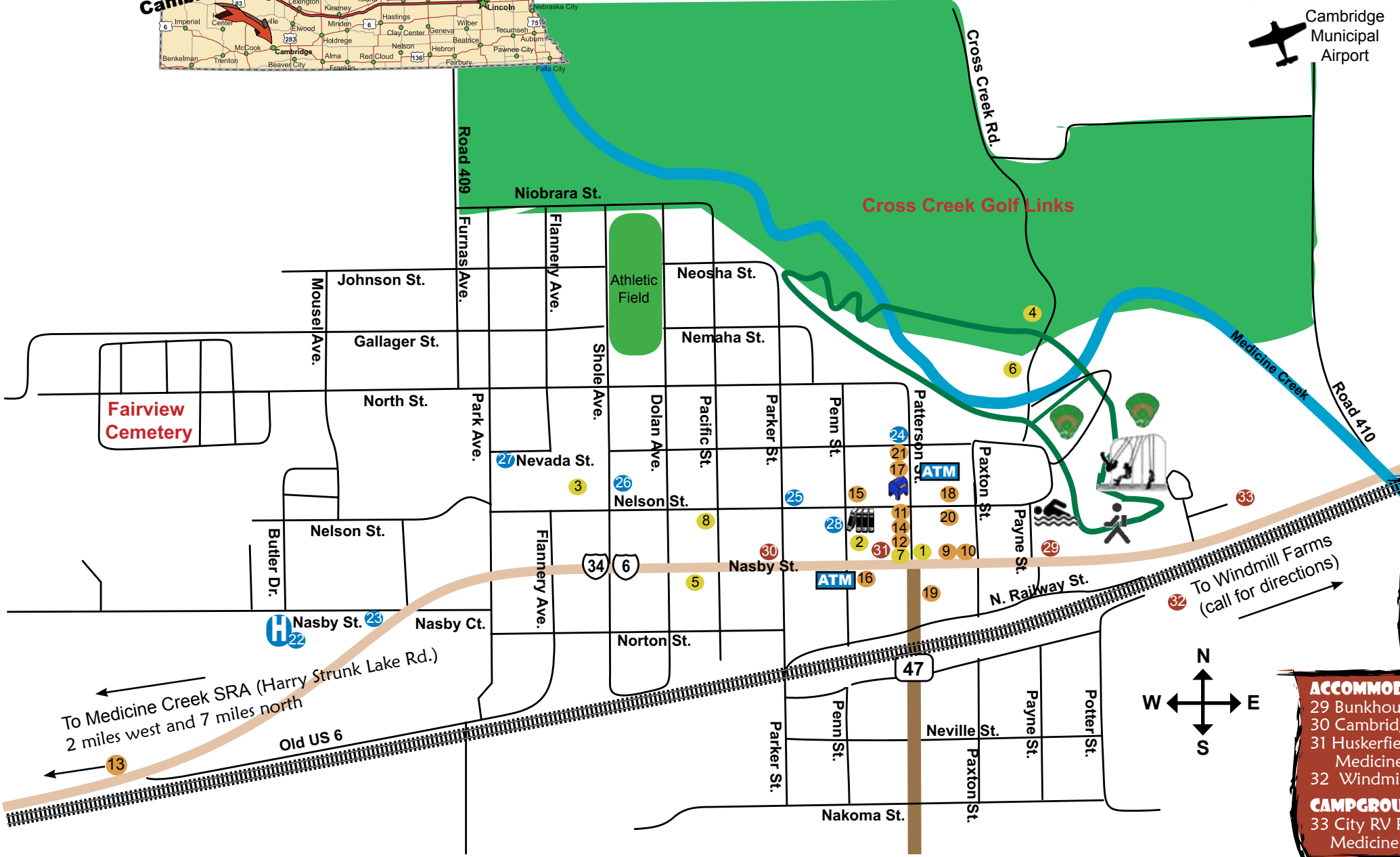
- 24 Calvary Baptist Church
- 25 First Congregational Church of Christ
- 26 St. John's Catholic Church
- 27 St. Paul's Lutheran Church
- 28 Trinity United Methodist Church

**ACCOMMODATIONS**

- 29 Bunkhouse Motel, 308.697.4540
- 30 Cambridge Bed & Breakfast, 308.697.3220
- 31 Huskerfields, 308.697.4974
- Medicine Creek Lodge, 308.697.3774 (see reverse)
- 32 Windmill Farms Hunting Lodge 308.493.5927

**CAMPGROUNDS**

- 33 City RV Park
- Medicine Creek State Recreation Area (see reverse)



www.cambridgene.org

# Medicine Creek State Recreation Area & Wildlife Management Area (Harry Strunk Lake)

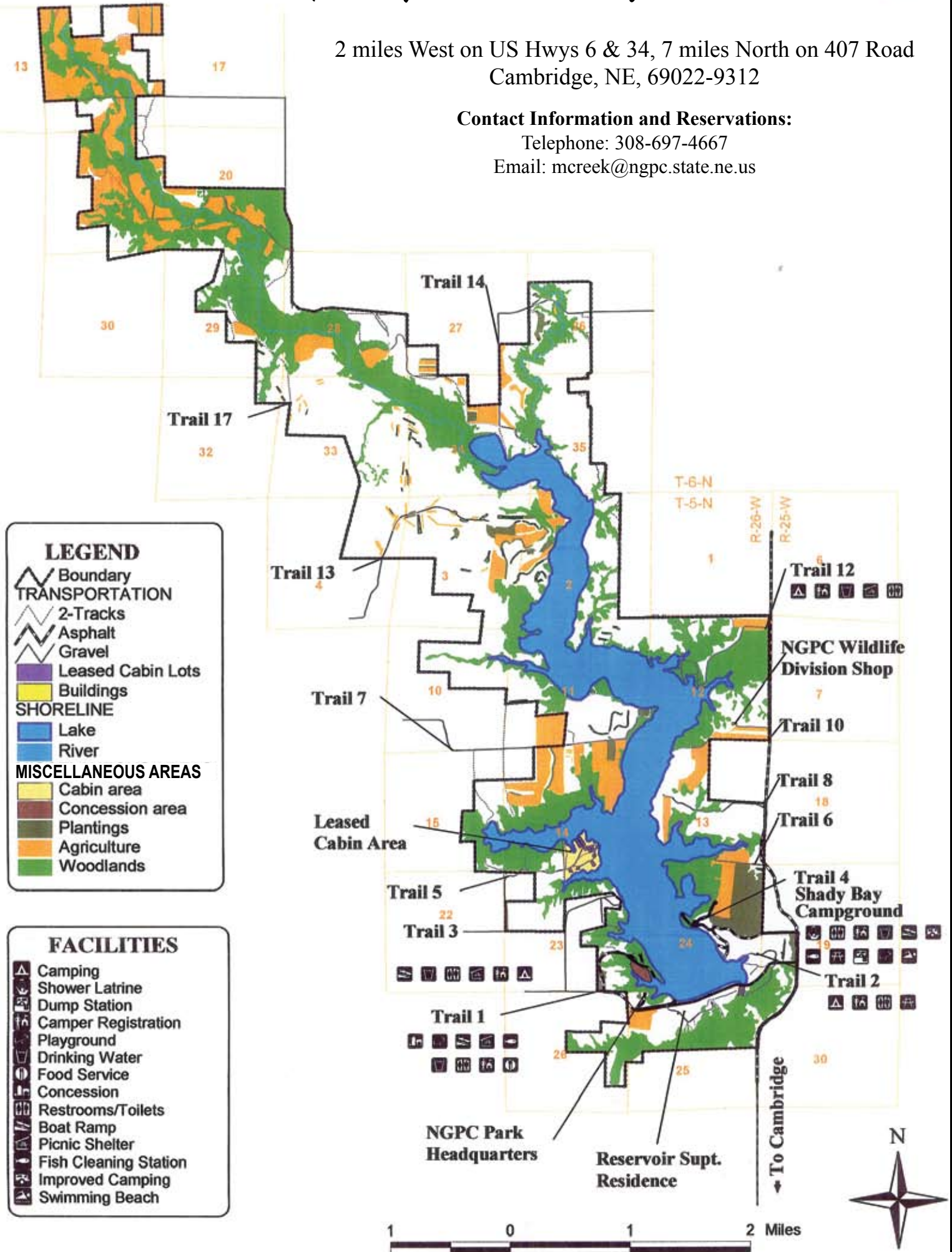


2 miles West on US Hwys 6 & 34, 7 miles North on 407 Road  
Cambridge, NE, 69022-9312

### Contact Information and Reservations:

Telephone: 308-697-4667

Email: [mcreek@ngpc.state.ne.us](mailto:mcreek@ngpc.state.ne.us)



Medicine Creek State Recreation Area and wildlife management area encompasses 8,900 acres of public land and water. Enjoy camping, fishing, watersports, birdwatching and hunting. Roughly 850 acres of food plots.

*Features and Amenities:* Fresh Water. Swimming beaches. Camping. Boat Docks. Electricity. Restrooms & Showers. Public Phone. Handicap Access. Trailer dumping station. Playground. Fish Cleaning Stations. Picnic Grounds & Tables. Barbecue grills. Full Service Marina.

*Number and Type of Campsites:* Total: 316, Paved: 76, Grass: 240 Back-ins (10 x 50) Room for slide outs.

*Stay limit:* 14 days. Open year-round.

*Trailer and RV Hook-ups:* Electric: 70 20/30 Amps

*Fish Populations:* Channel and Flathead Catfish, Crappie, Walleye, White Bass, Largemouth Bass, Wiper, Drum

*Wildlife Populations:* Mule Deer, White-tailed Deer, Pheasant, Quail, Turkey, Dove, Squirrel, Rabbit, Waterfowl